

Batch Rename Training

Batch Rename_Training.zip



Batch Rename - Overview

Work on the part with the red circle (1) following instructions by yourself.

The part with the black square (1) is an additional explanation or a reference.

Main Functions

- Copy referenced drawing files together.
- Change the multiple filenames with keeping reference relations.
- Creates a log file to help users track changes.

Benefits

- Reduce the amount of works related repetitive tasks.
- No need to copy referenced drawing files separately.
- Useful to manage the file as changing words using various options.

Course Objective: Follow instructions through the course and learn how to use Batch Rename.

The screenshot displays the Batch Rename application window. On the left, there are buttons for 'Add Files', 'Add Folder', 'Add ref. Comp', and 'Serial No.'. Below these are icons for file types. The main area contains a table with columns: Chk, Type, Origin, Change to, and File Directory. A 'Serial No.' dialog is open, showing a 'Serial Number Rule' of 'A2C####' and a 'Create Serial Number' button. A 'Serial No.' table lists files with their serial numbers and file paths. A 'Replace Words' dialog is open, showing 'Find Words' as 'REV_01' and 'Replace Words' as 'REV_02'. A 'Remove Words' dialog is also open, showing 'Count to be removed' as 0 and 'At the beginning' selected. A 'Prefix' dialog is open, showing 'Add words' as 'CKM' and 'At the beginning' selected. A 'Suffix' dialog is open, showing 'Add words' as 'REV_01' and 'At the end' selected. A 'Changing Name Option' dialog is open, showing 'Rename by copied file' selected and 'Copy Directory' as 'D:\Test'. A 'Waiting' status bar is at the bottom.

Batch Rename

Buttons: Add Files, Add Folder, Add ref. Comp, Serial No., Add Words, Remove Words, Replace Words, Create Log File, Including path info, If the drawing file name is the same, change it together.

Serial No.

Serial Number Rule: Start Number 1, Number Rule A2C####, # Insert digits, Create Serial Number, Change the order, Move Up, Move Down, Reload.

Origin Name	Serial Number	File path
Axle.Cap.SLDPRT	A2C000001	D:\Sample\BatchRename\Axle.Cap.SLDPRT
Axle.SLDPRT	A2C000002	D:\Sample\BatchRename\Axle.SLDPRT
Axle.Support.SLD...	A2C000003	D:\Sample\BatchRename\Axle.Support.SL...
Blade.SLDPRT	A2C000004	D:\Sample\BatchRename\Blade.SLDPRT
Brace.Pipe.SLDPRT	A2C000005	D:\Sample\BatchRename\Brace.Pipe.SLDP...
Caster.Assembly.S...	A2C000006	D:\Sample\BatchRename\Caster.Assembl...
Handle.SLDPRT	A2C000007	D:\Sample\BatchRename\Handle.SLDPRT
Lower Pipe.SLDPRT	A2C000008	D:\Sample\BatchRename\Lower Pipe.SLD...
Mounting.Plato.S...	A2C000009	D:\Sample\BatchRename\Mounting.Plato...
Short.Pipe.SLDPRT	A2C000010	D:\Sample\BatchRename\Short.Pipe.SLDP...
Tire.Plastic.SLDPRT	A2C000011	D:\Sample\BatchRename\Tire.Plastic.SLD...

Prefix

Add words: CKM

At the beginning

After Nth place: 1

Suffix

Add words: REV_01

At the end

Before Nth place from the back: 1

Changing Name Option

Rename the original file

Create Backup File

Rename by copied file

Copy Directory: D:\Test

Replace Words

Find Words: REV_01

Replace Words: REV_02

Case Sensitive

Remove Words

Count to be removed: 0

At the beginning

From the middle (Nth place): 1

At the end

Diagram:

ABC_MODEL_001.SLDPRT

ABC_MODEL_001.SLDDRW

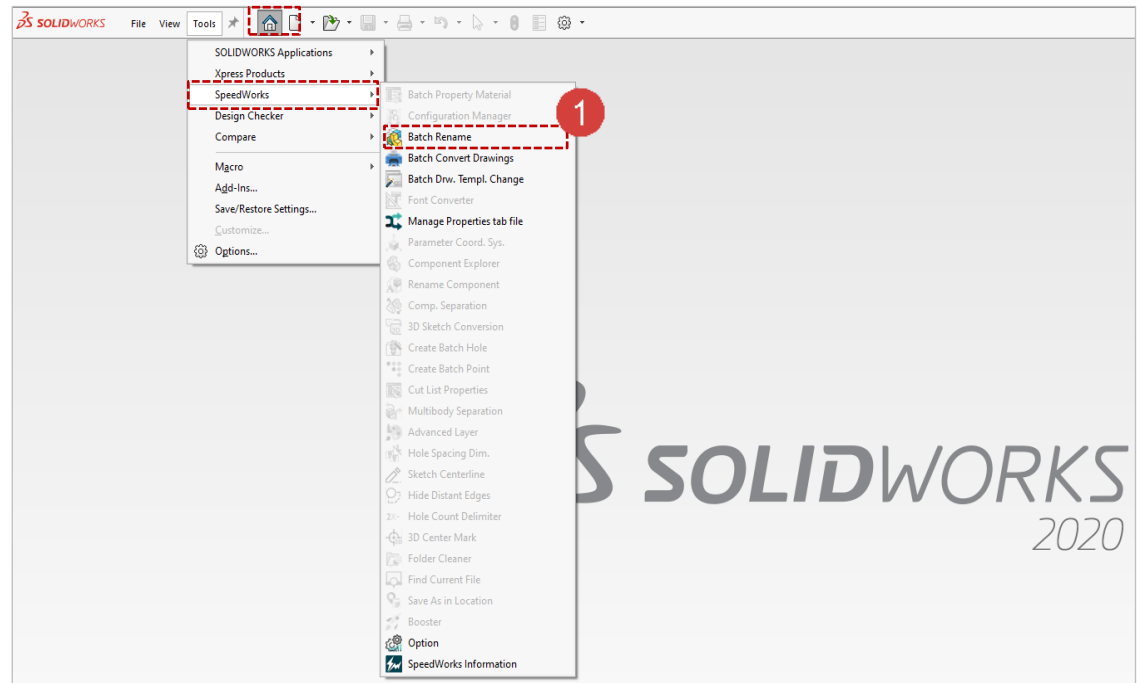
EFG_MODEL_002.SLDPRT

EFG_MODEL_002.SLDDRW

Batch Rename - Execute

Work on the part with the red circle (1) following instructions by yourself.
The part with the black square (1) is an additional explanation or a reference.

- 1 Execute **SOLIDWORKS** and click [Tool] – [SpeedWorks]tab – [Batch Rename] to run the tool.



※ You can download example files at Support page in SpeedWorks Homepage(<https://speedworks.info>).

Batch Rename - Add Target File

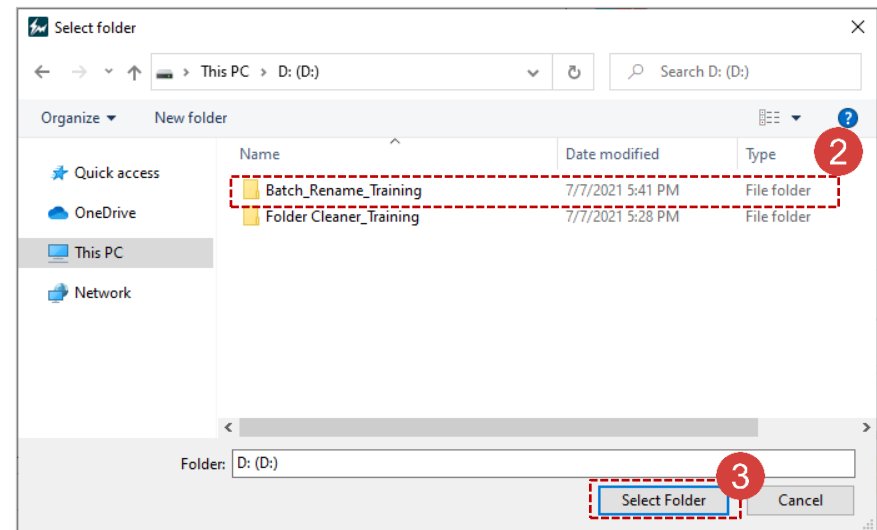
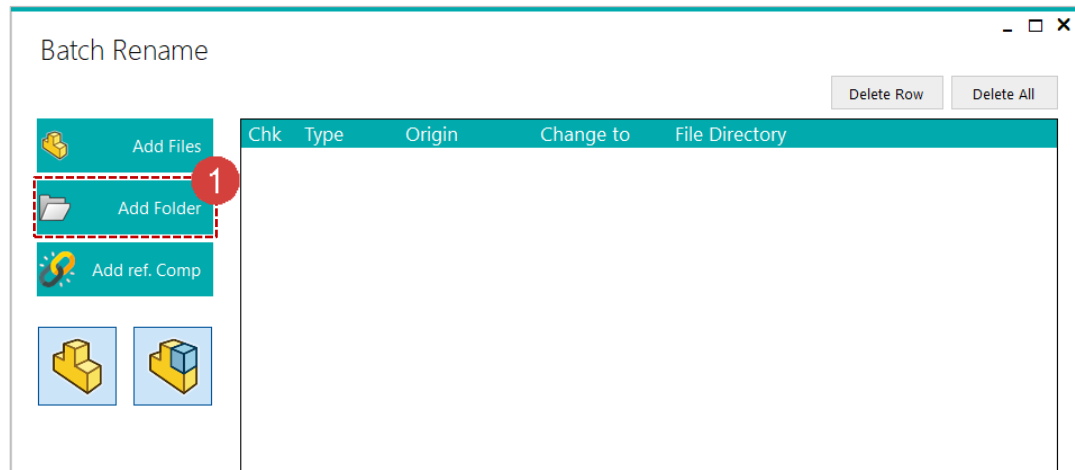
Work on the part with the red circle (1) following instructions by yourself.
The part with the black square (1) is an additional explanation or a reference.

1 Click **[Add Folder]** to add all parts and assembly files in the folder to the list.


2 Select the folder containing Bath Rename_Training example which is provided with the manual.

In this example, D:\Batch Rename_Training folder has been selected since the file is saved in it.

3 Click **[Select Folder]** to add the folder.



Batch Rename - Add Prefix

1 Click **[Assembly]** icon  to **unselect** assembly files at once.

2 Click **[Add Words]** button to add a word at a file name.

3 Check **[Prefix]**.

4 Enter 'P_' into **[Add words]**.

5 Check **[At the beginning]** and add the word at the beginning of the file name.

6 Click **[OK]** button.

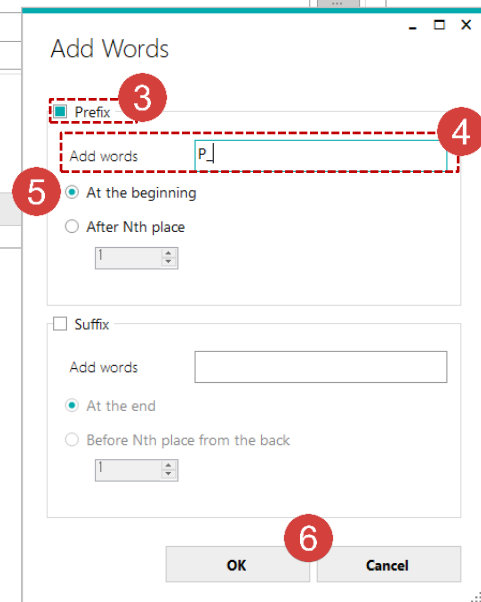
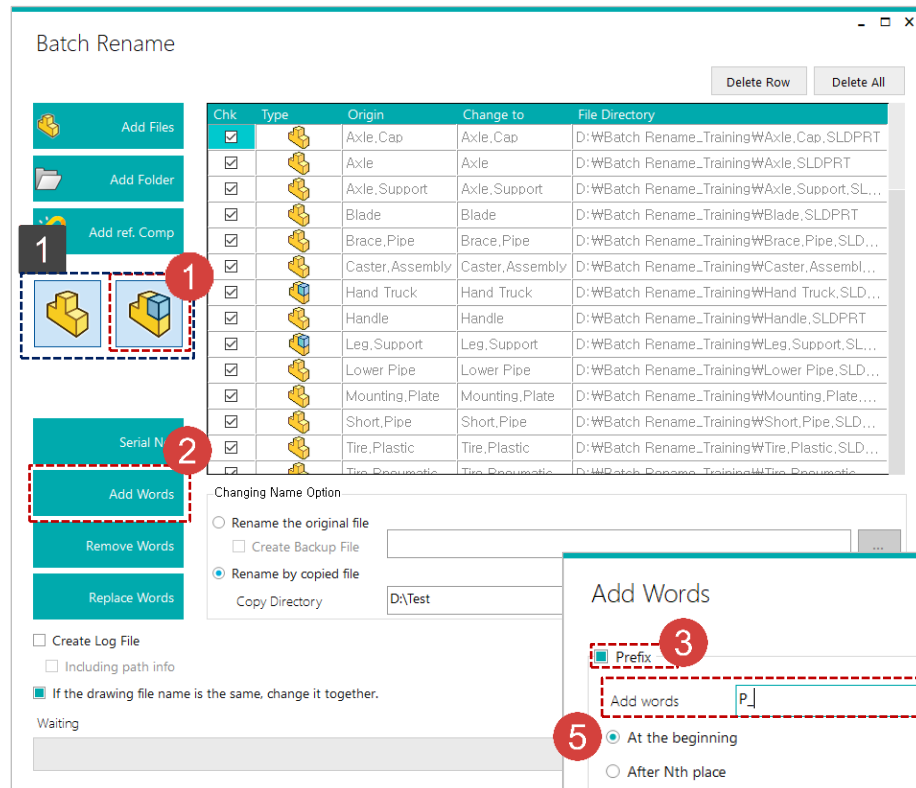
1 **Part/Assembly icon:** Check or Uncheck files depending on the type of the target file to select them at once.



Clicked:




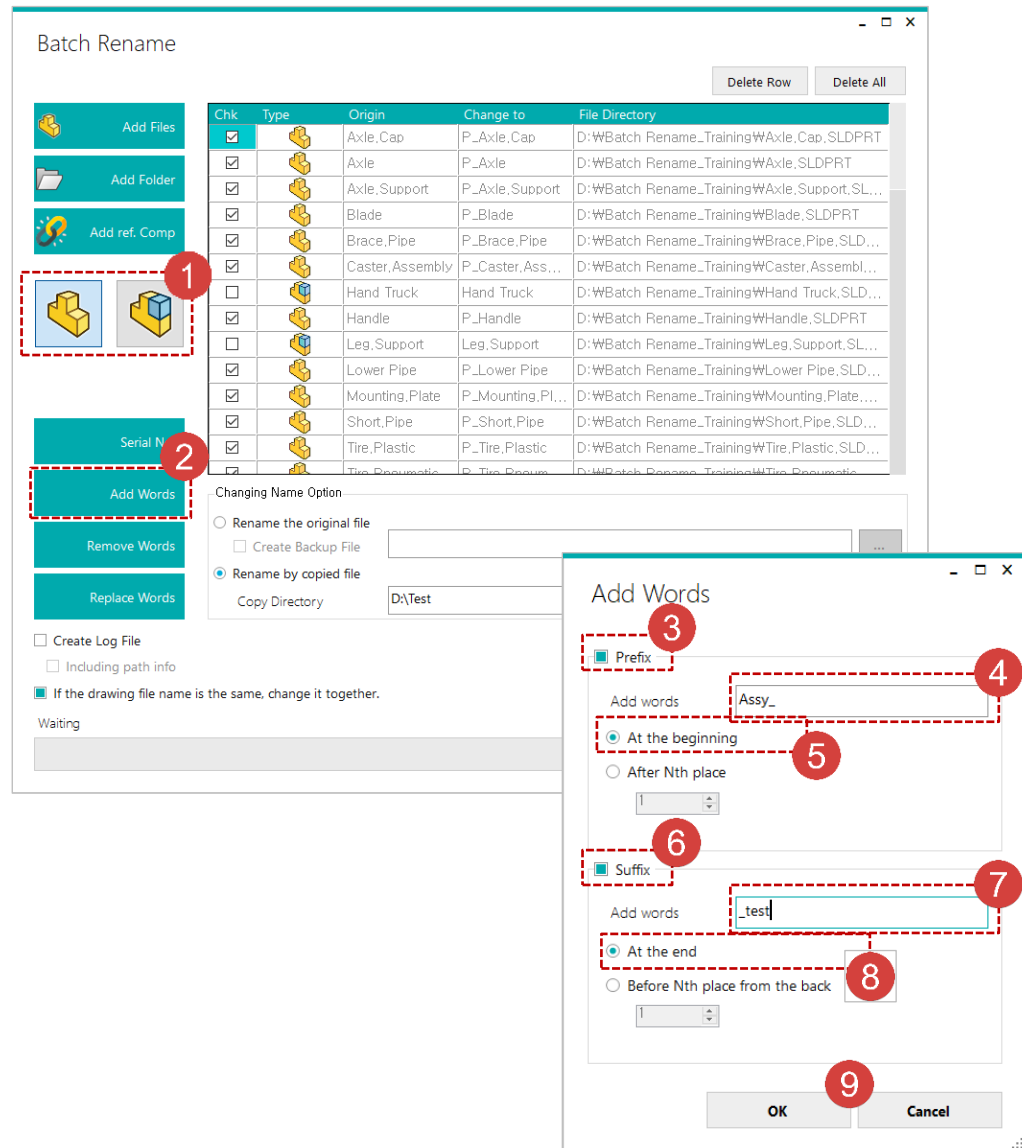
Unclicked:



Batch Rename - Add Suffix

Work on the part with the red circle (1) following instructions by yourself.
The part with the black square (1) is an additional explanation or a reference.

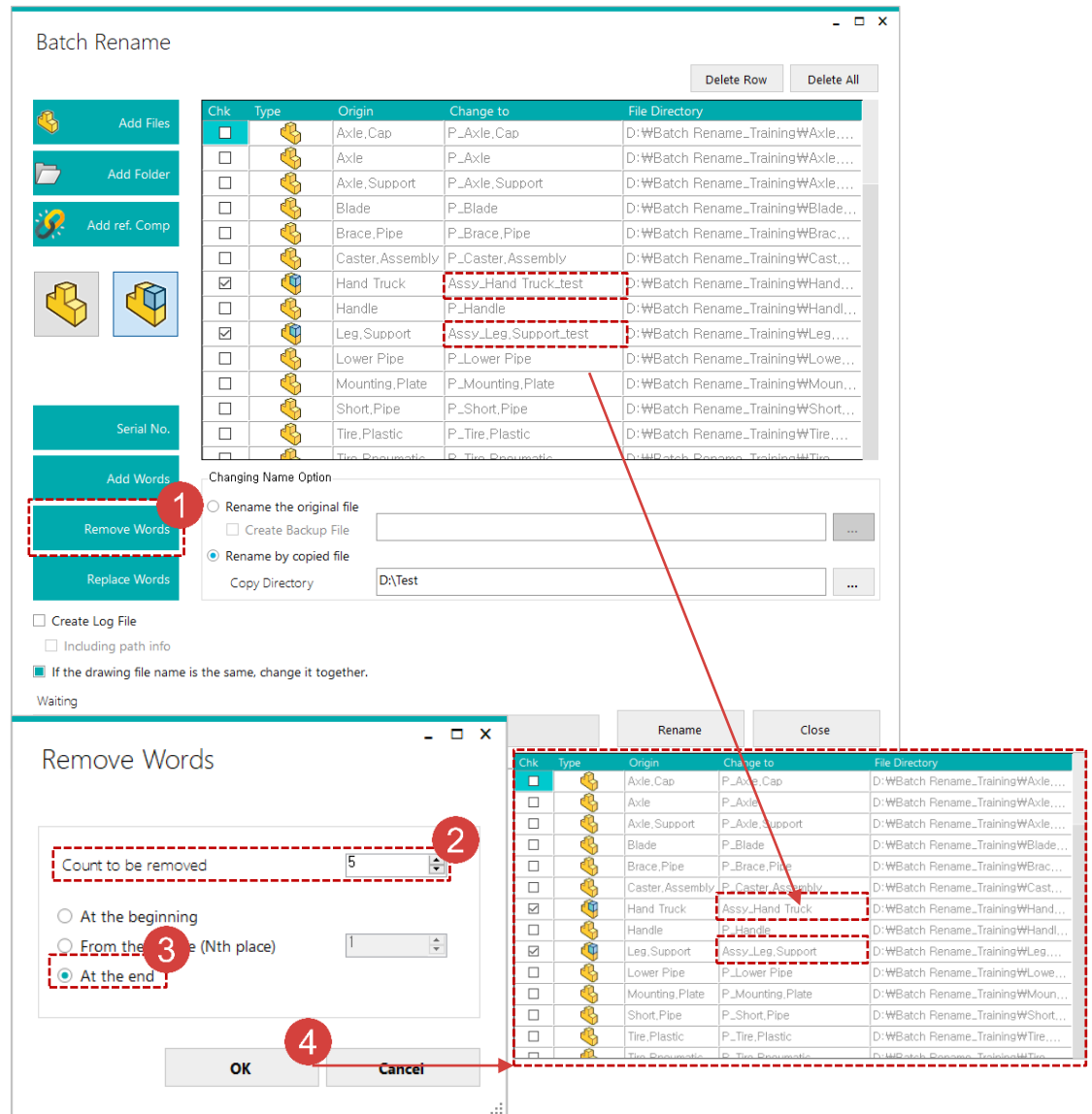
- 1 Click [Part/Assembly] icon () to select only assembly files.
- 2 Click [Add Words] button.
- 3 Check [Prefix].
- 4 Enter 'Assy_' into [Add words].
- 5 Check [At the beginning].
- 6 Check [Suffix].
- 7 Enter '_test' into [Add words].
- 8 Check [At the end].
- 9 Click [OK] button.



Batch Rename - Remove Words



Work on the part with the red circle (1) following instructions by yourself.
The part with the black square (1) is an additional explanation or a reference.

- 1 Click **[Remove Words]** button.
- 2 Enter '5' into **[Count to be removed]**.
- 3 Check **[At the end]**.
- 4 Click **[OK]** button.



Batch Rename - Replace Words

Work on the part with the red circle (1) following instructions by yourself.
The part with the black square (1) is an additional explanation or a reference.

1 Click [Part/Assembly] icon ( ) to only select part files.

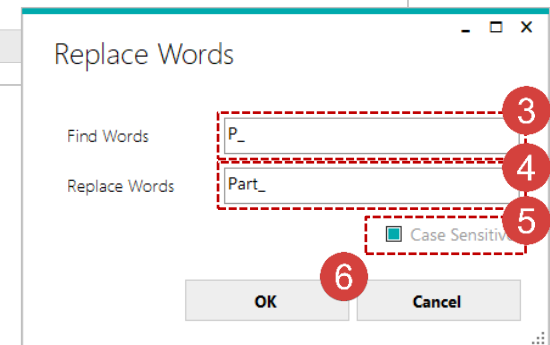
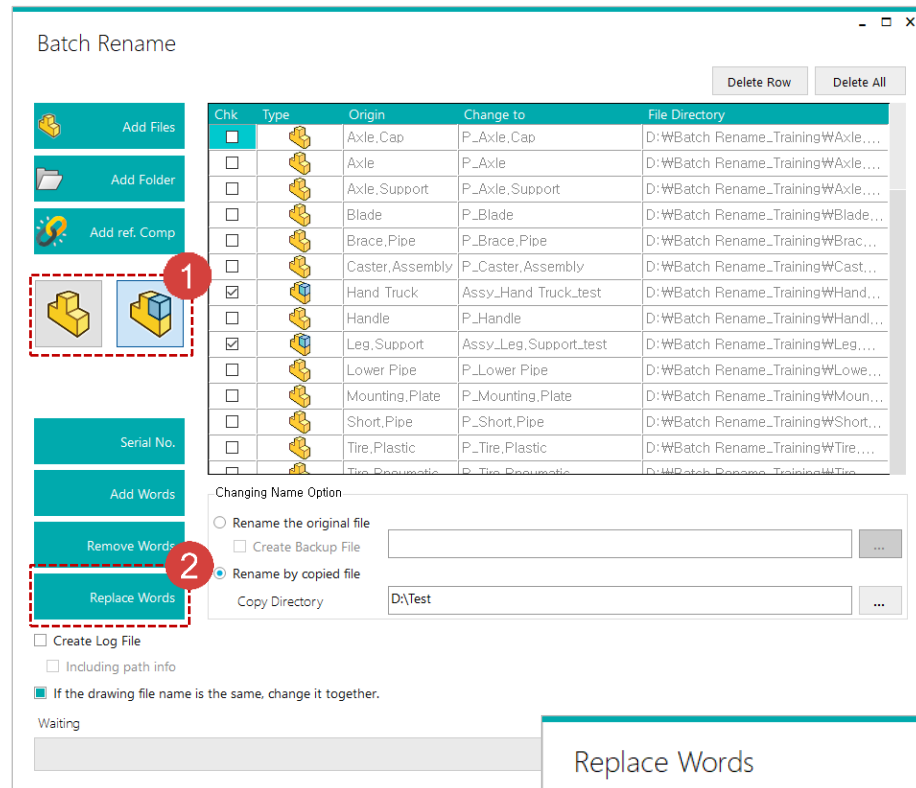
2 Click [Replace Words] button.

3 Enter 'P_' into [Find Words].

4 Enter 'Part_' into [Replace Words].

5 Check [Case Sensitive].

6 Click [OK] button.

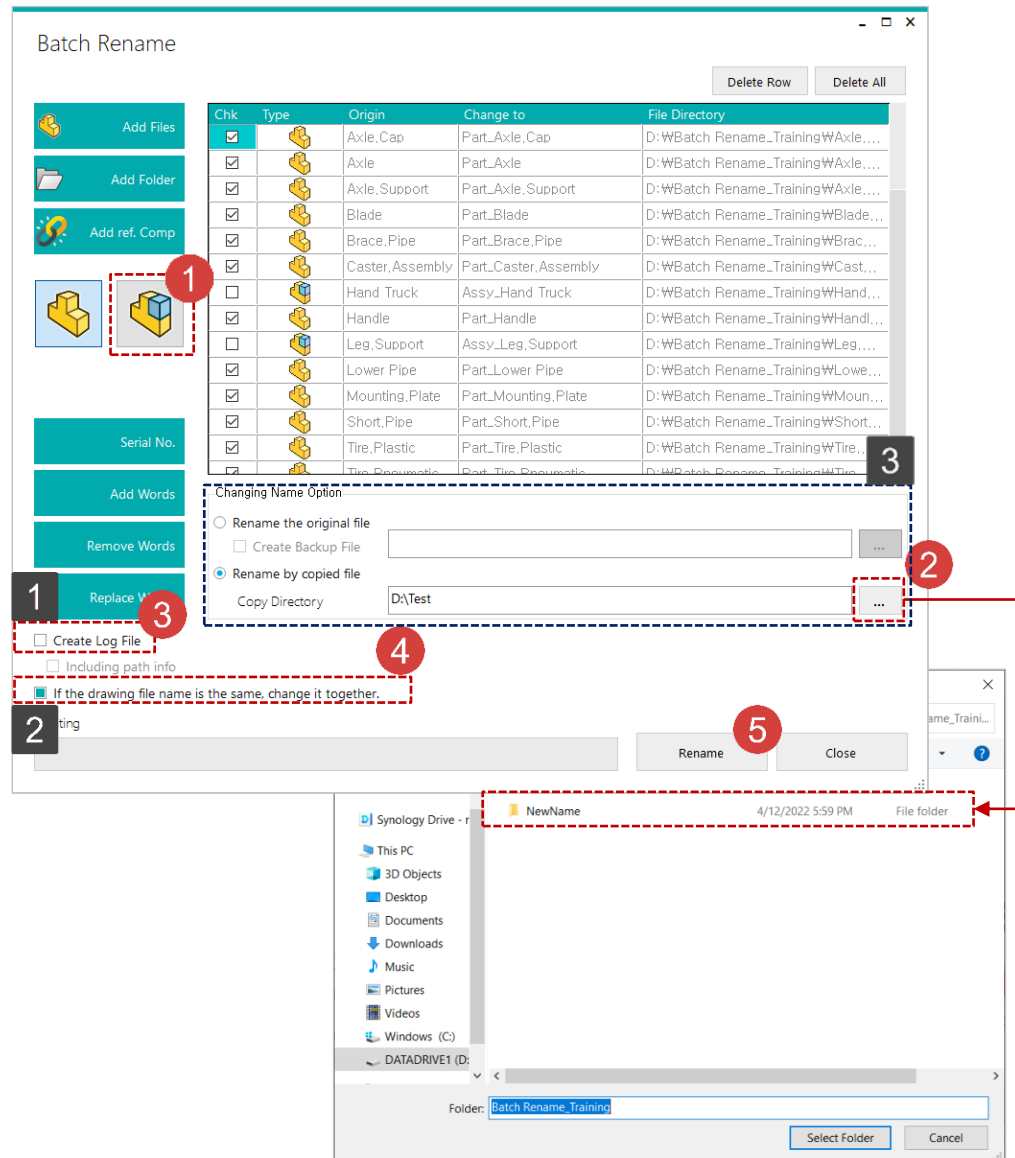


Batch Rename - Rename

Work on the part with the red circle (1) following instructions by yourself.
The part with the black square (1) is an additional explanation or a reference.

- 1 Click **[Assembly]** icon to **select all files**.
- 2 Click [...] at **[Copy Directory]** to specify the copy directory.
- 3 Check **[Create Log File]**.
- 4 Check **[If the drawing file name is the same, change it together]**.
- 5 Click **[Apply Change]** button.

- 1 If **[Create Log File]** is checked, a log file which includes the name and the location of both the original file and the changed file will be created.
- 2 If **[If the drawing file name is the same, change it together]** is checked, a copy will be created when there is a drawing file of which name is same as the target file.
- 3 Users can specify how to rename file option in **[Changing Name Option]**.



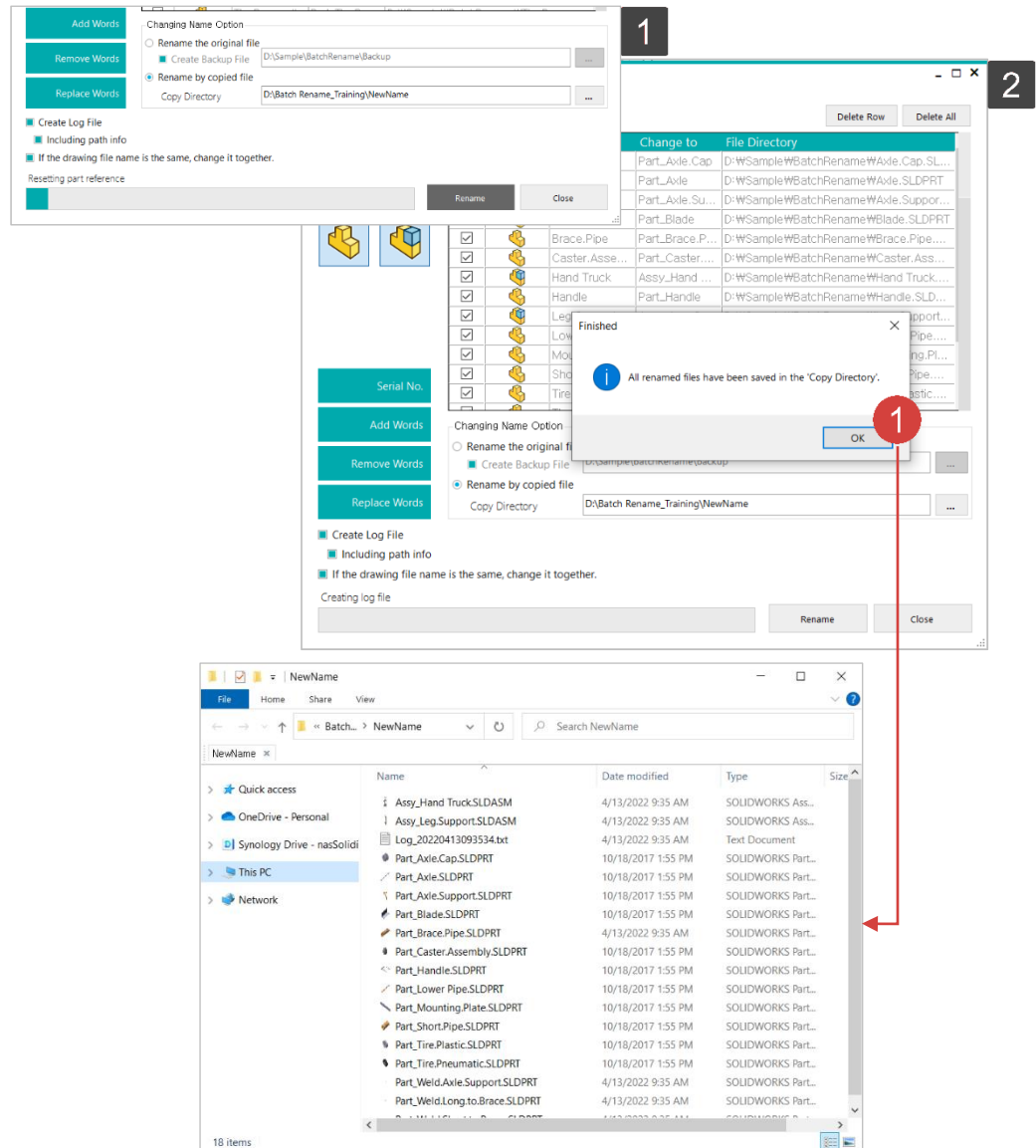
Batch Rename - Rename Progress

Work on the part with the red circle (1) following instructions by yourself.
The part with the black square (1) is an additional explanation or a reference.

1 Click [OK] button to open the save location.

1 The picture shows that resetting reference relations of the copied files after copies are created.

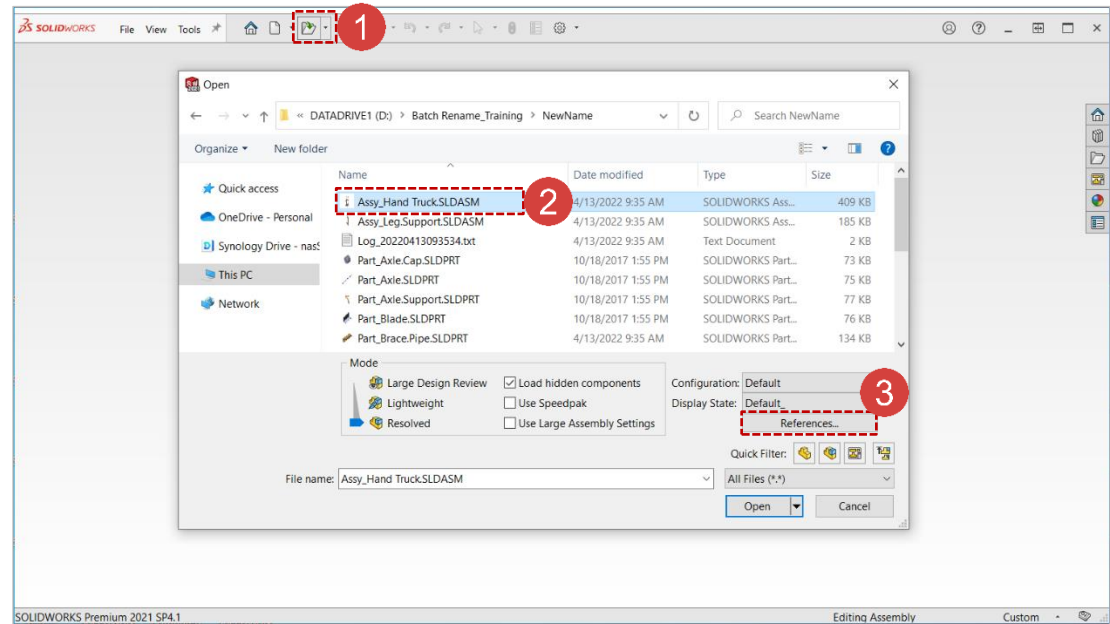
2 Once every process is done, a notification window will pop up.



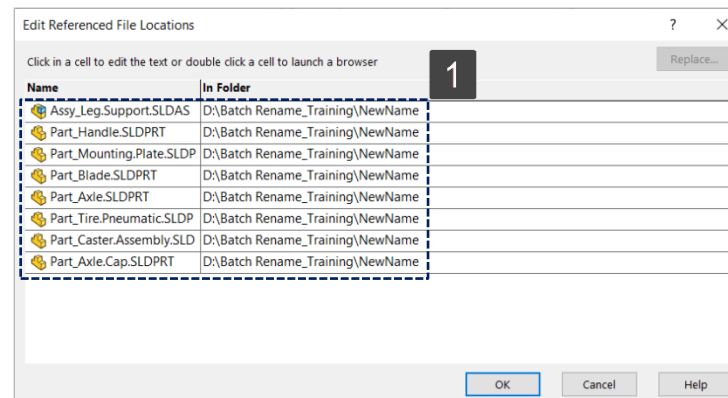
Batch Rename - Output Review

Work on the part with the red circle (1) following instructions by yourself.
The part with the black square (1) is an additional explanation or a reference.

- 1 Click **SOLIDWORKS** - [Open] button.
- 2 Select **Assy_Hand Truck.SLDASM** in the folder set as copy directory.
- 3 Click [Reference] button.



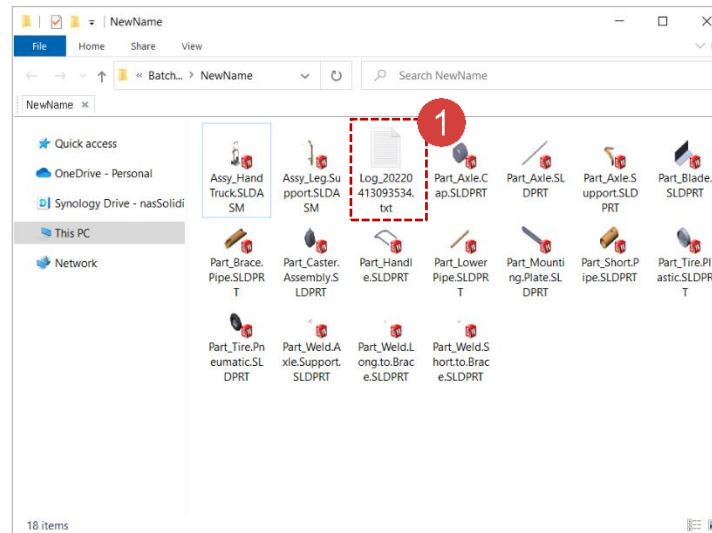
- 1 The names displayed on [Find References] window are same as names of the files created earlier through [Batch Rename] process.



Batch Rename - Review Log File

Work on the part with the red circle (1) following instructions by yourself.
The part with the black square (1) is an additional explanation or a reference.

- 1 Execute [Copy Directory]-
Log_YYYYMMDDSS.txt file to check the log file.



- 1 The first row indicates the time when the copy has been created.

The location for the original file is written at the left side of arrow. And the location of the copy is written at the right side of it displays. To figure out the relation between original file and copy easier if you refer a log file.

